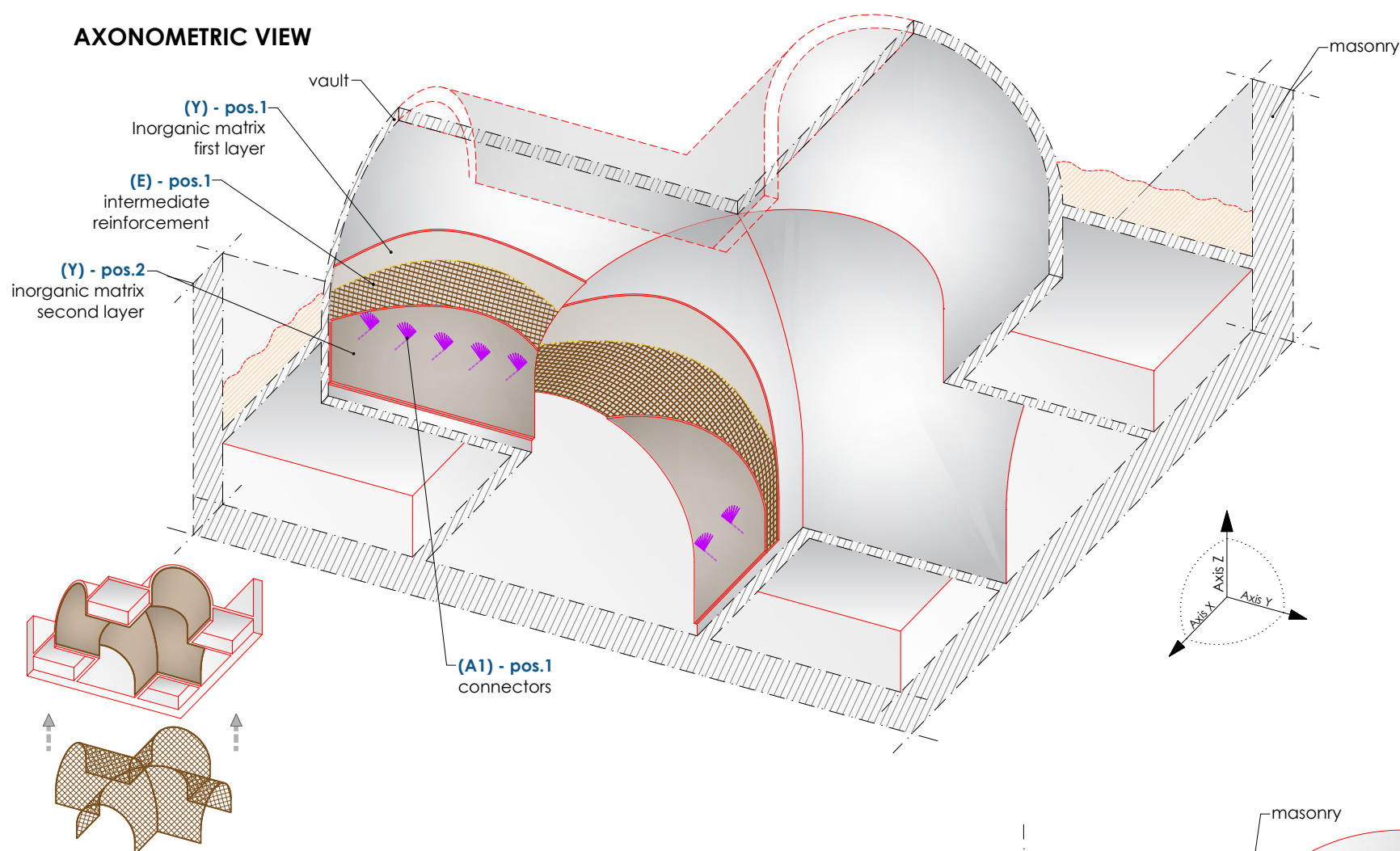
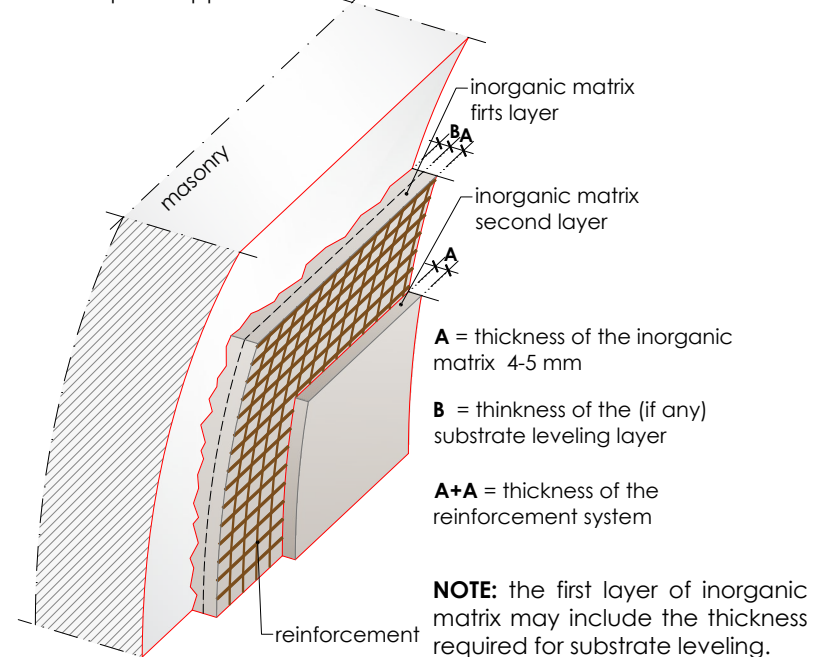
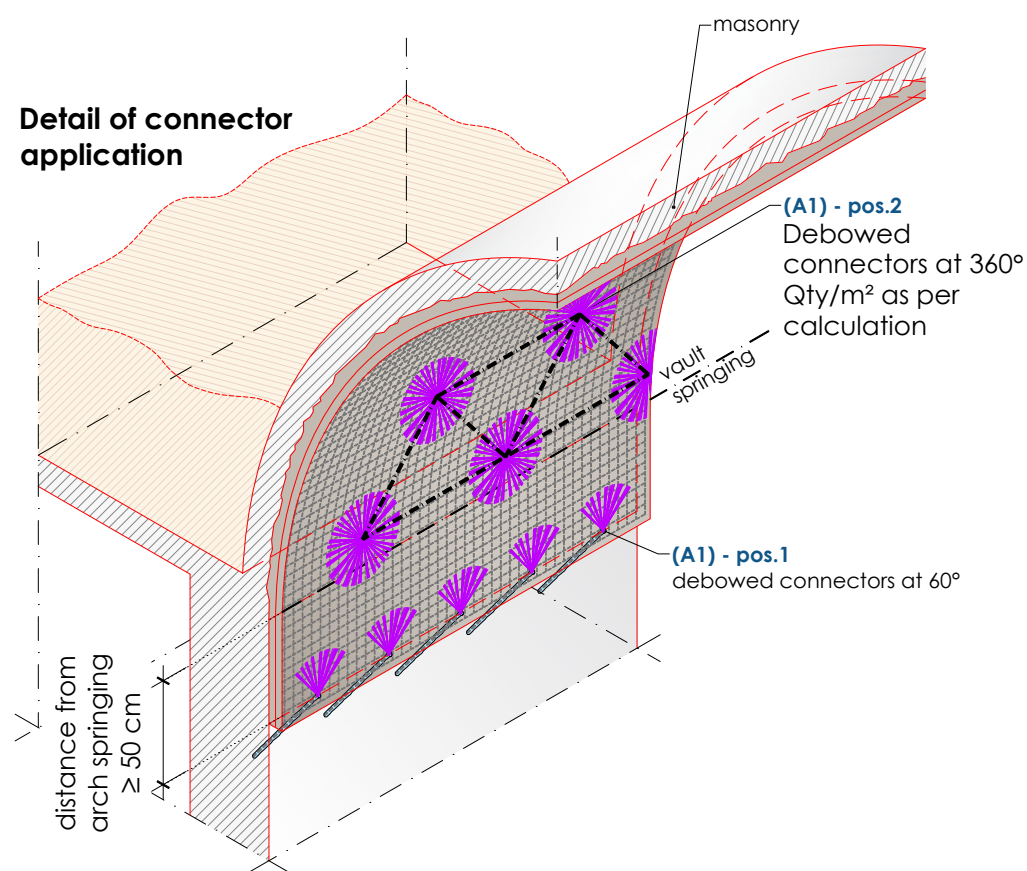




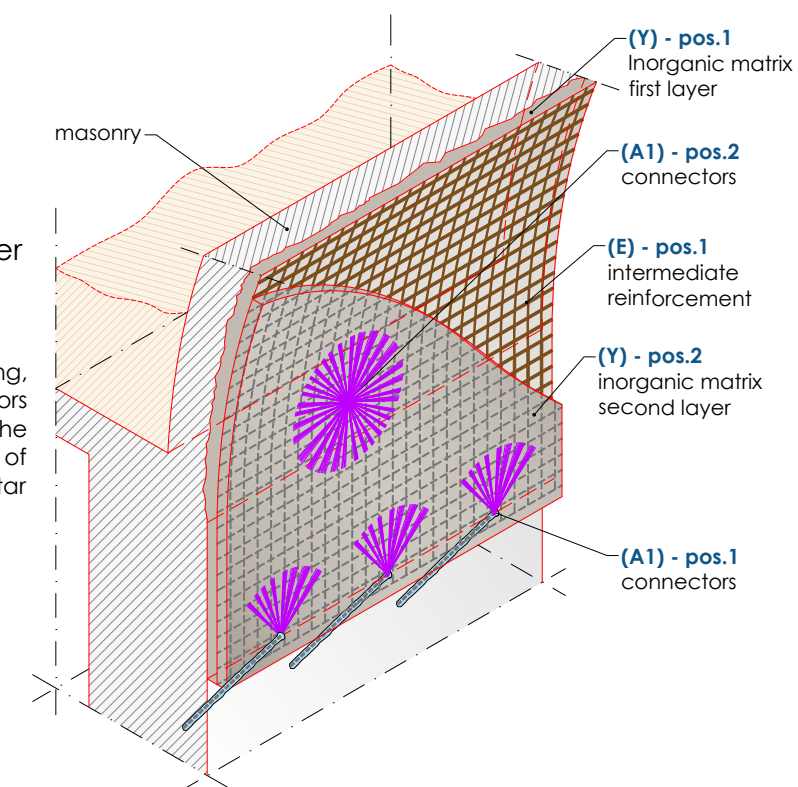
AXONOMETRIC VIEW

Stratigraphy detail
complete application

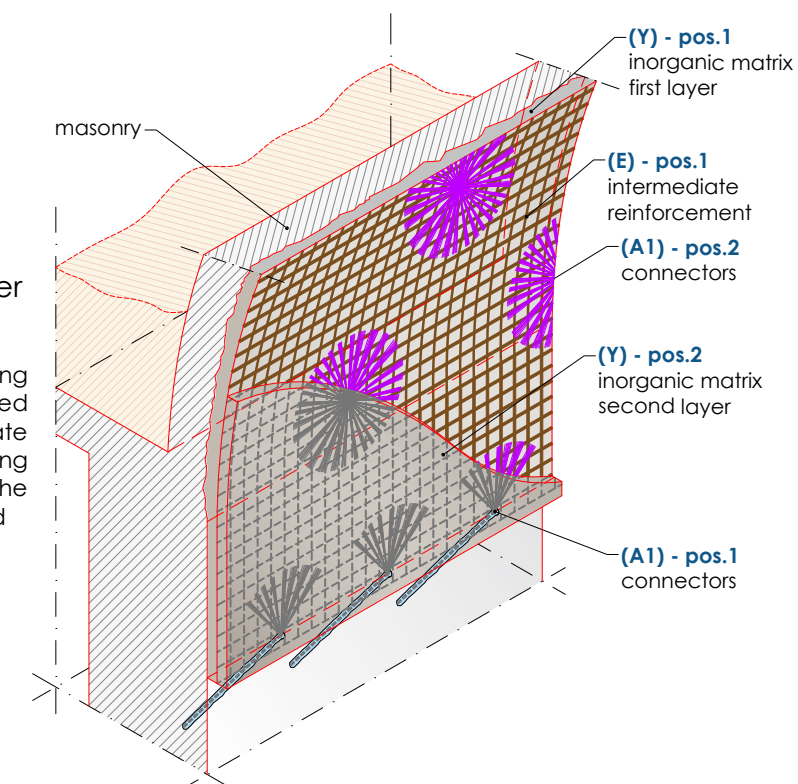
Detail of connector application

Detail SOLUTION "A" -
Debowed connectors over
the second layer of
inorganic matrix

The layout marking, anchoring, and debowing of the connectors shall be carried out only after the installation of the second layer of inorganic matrix, once the mortar has fully hardened.

DETAIL SOLUTION "B" -
Debowed connectors over
the reinforcement

The layout marking and anchoring of the connectors shall be carried out after Phase 0 of substrate preparation, while the debowing shall be performed only after the reinforcement has been installed.



MATERIAL IDENTIFICATION - C-MATRIX system

(Y) INORGANIC MATRIX

(E) REINFORCEMENT

(A1) FB-TUP10-....(bowed connectors)

(P3) FB-....INTEGRA FIXA-.... (Anchoring resin)

Dimensions are in mm unless otherwise specified
For the material table, refer to the drawing FRCM08.