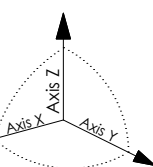
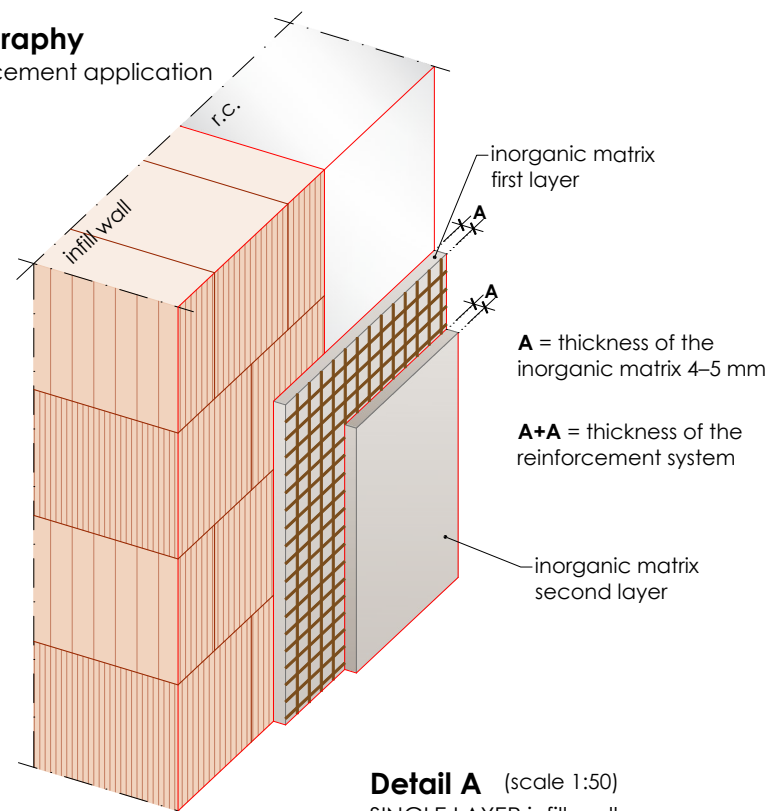


Stratigraphy

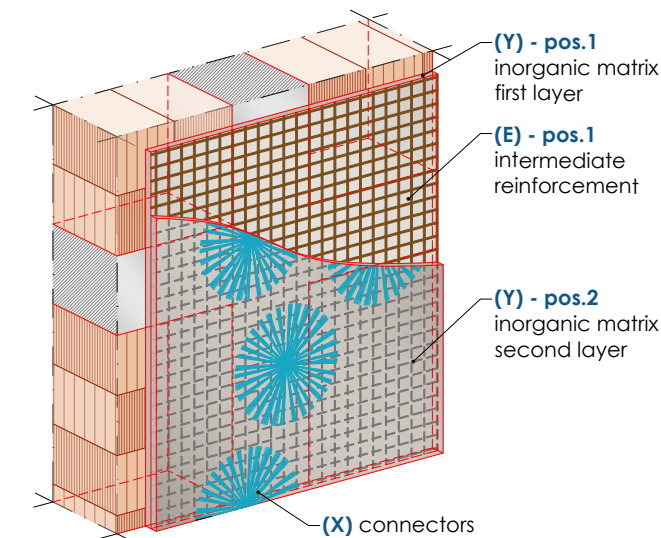
Reinforcement application



- Note:**
- Connectors on the infill walls
 - ◆ Connectors on the structural frame

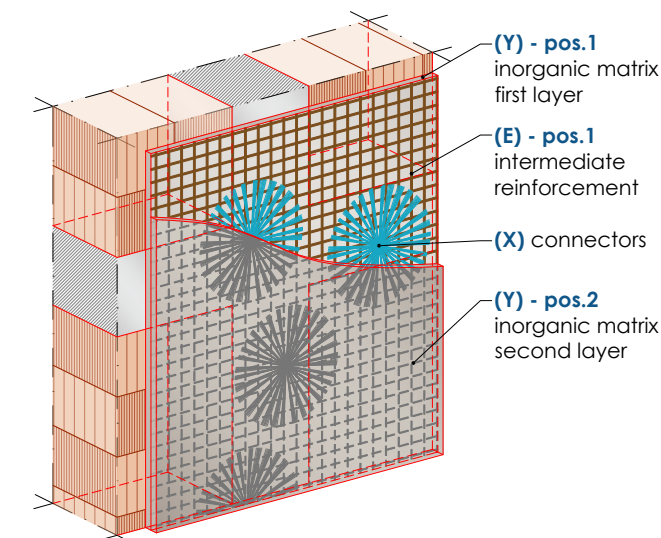
Detail of SOLUTION "A" - Debowed connectors above the second layer of inorganic matrix

Marking, anchoring, and debowing of the connectors must be carried out only after the application of the second layer of inorganic matrix, once the mortar has fully hardened.



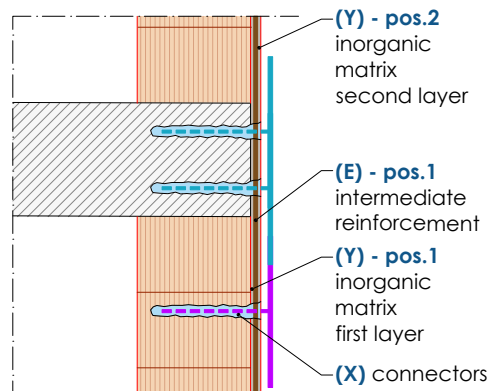
Detail of SOLUTION "B" - Debowed connectors above the reinforcement

Marking and anchoring of the connectors must be carried out after Phase 0 (substrate preparation), while the debowing is performed only after the reinforcement has been installed.



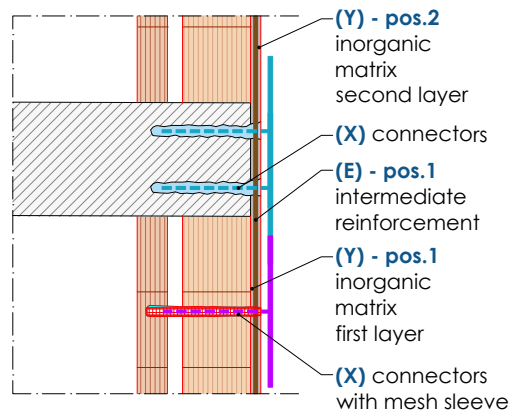
Detail A (scale 1:50)

SINGLE LAYER infill wall



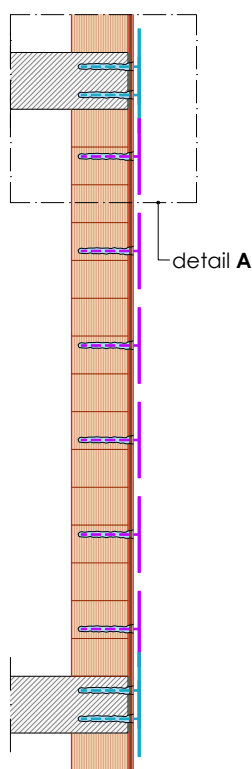
Detail B (scale 1:50)

MULTI-LAYER infill wall



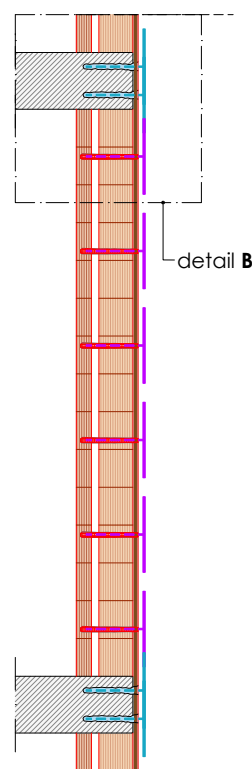
Section S1-S1 (scale 1:100)

SINGLE LAYER infill wall



Section S1-S1 (scale 1:100)

MULTILAYER infill wall



MATERIAL IDENTIFICATION - C-MATRIX system

- (Y) INORGANIC MATRIX
- (E) REINFORCEMENT
- (X) FB-TUP10-....(bowed connectors) or other type of connection system
- (P3) FB-....INTEGRA FIXA-.... (anchoring resin)

Dimensions are expressed in mm unless otherwise specified. For the materials table, refer to drawing FRCM 08.

