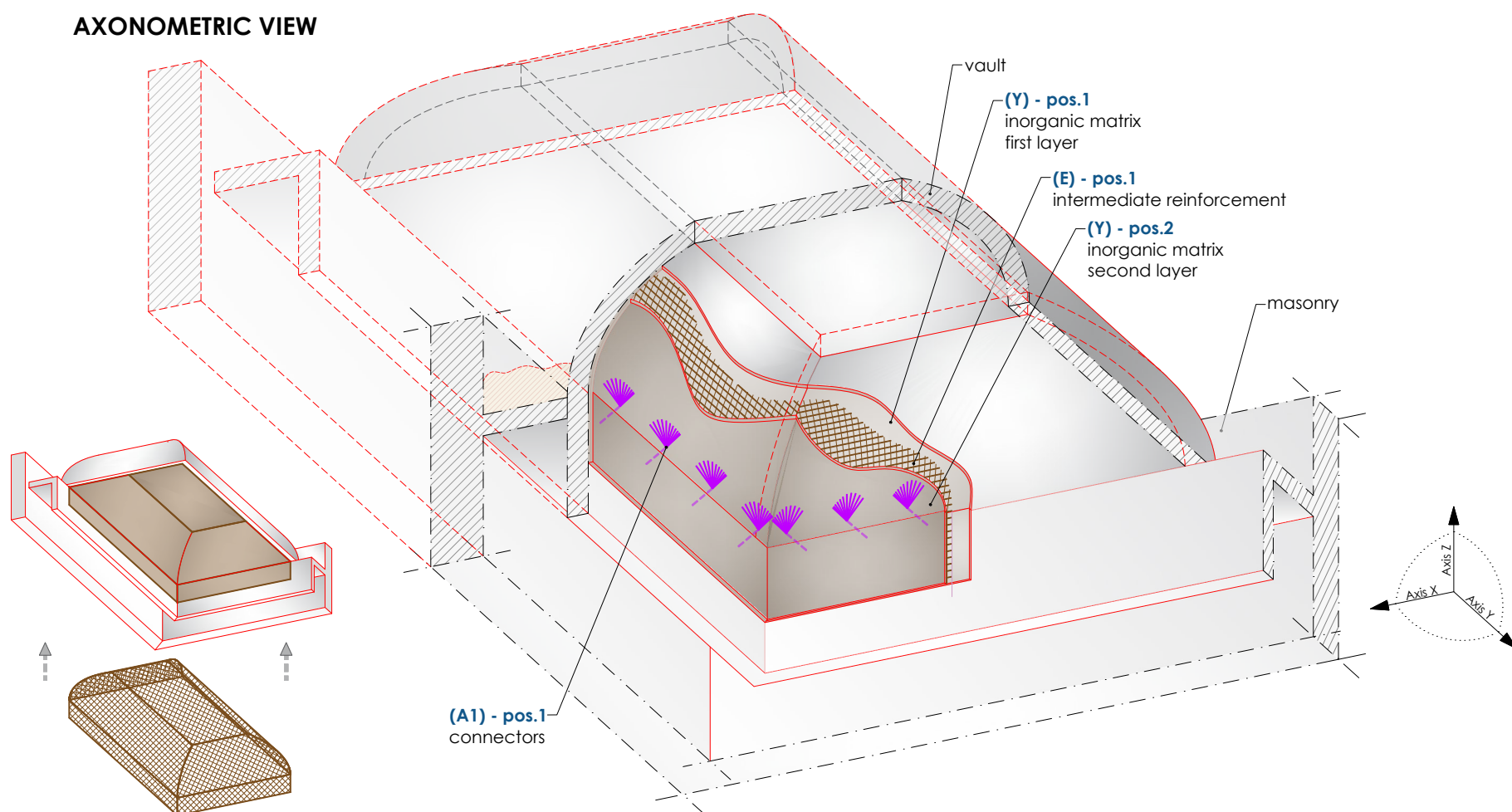
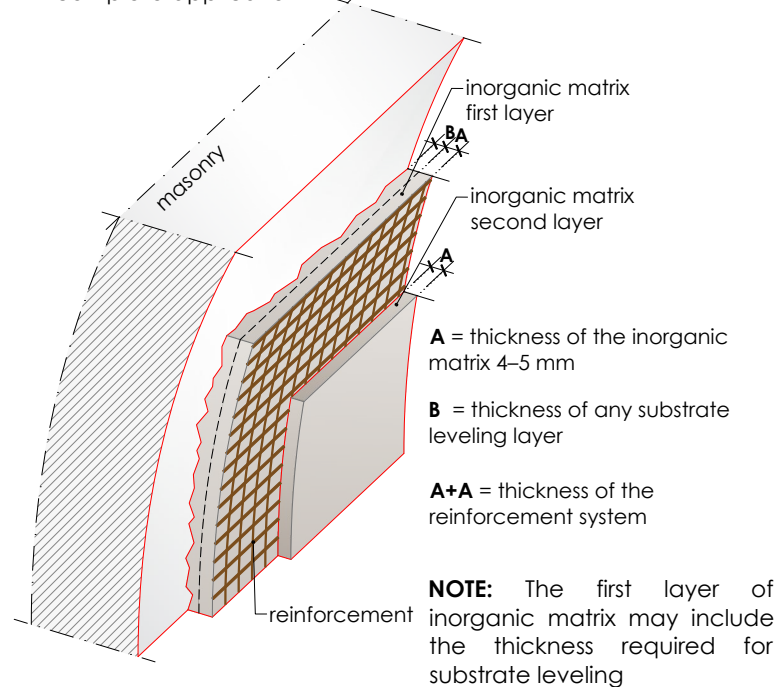
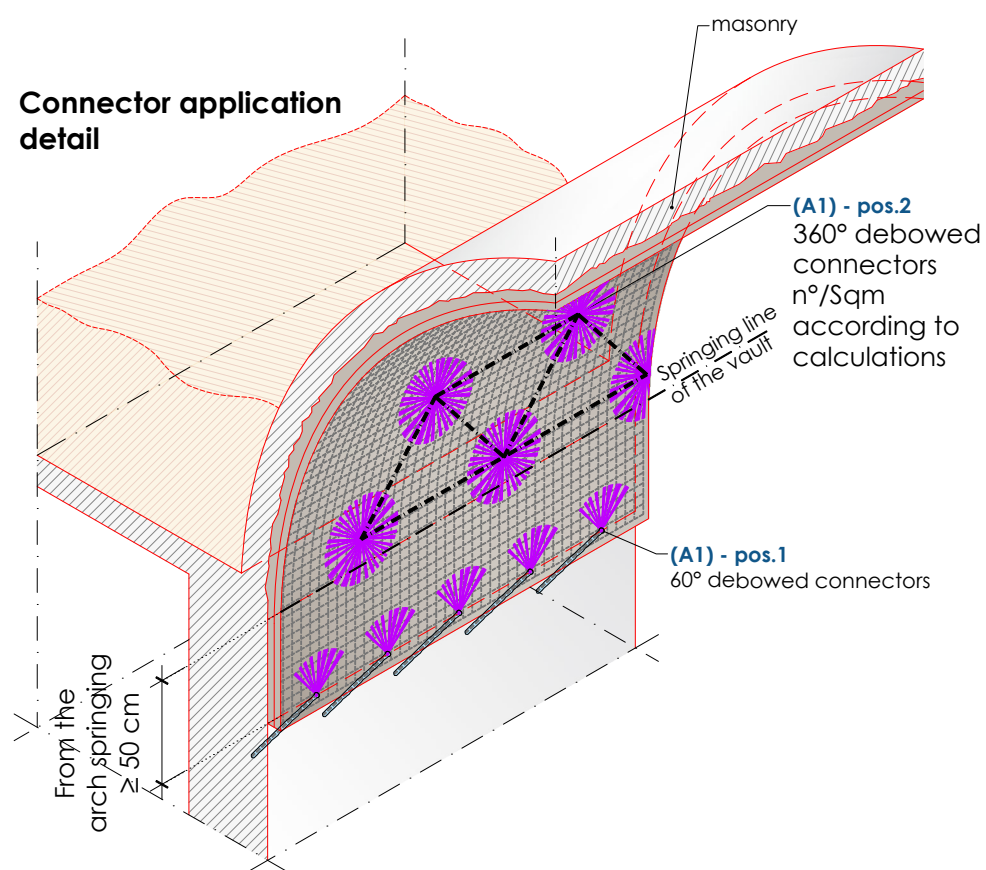
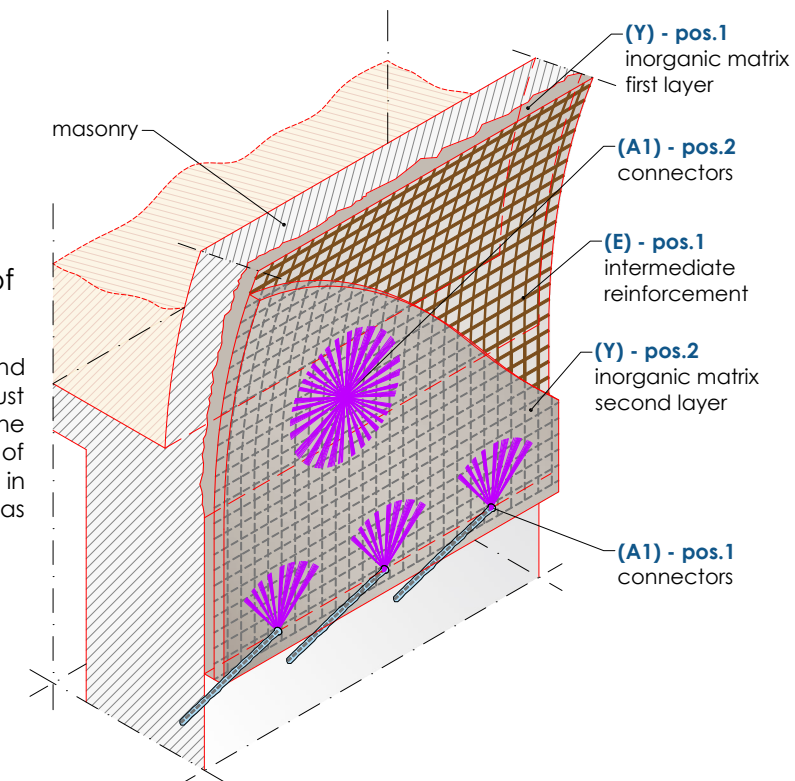




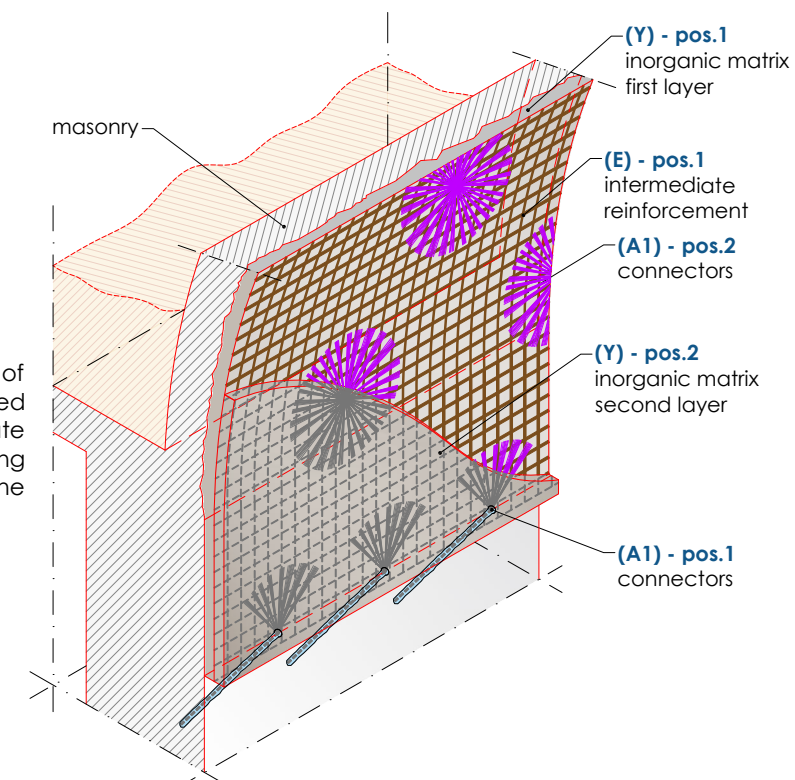
AXONOMETRIC VIEW

Stratigraphy detail
complete applicationConnector application
detailDetail SOLUTION "A" -
Debowed connectors
above the second layer of
inorganic matrix

The marking out, anchoring, and debowing of the connectors must be carried out only after the installation of the second layer of inorganic matrix, embedded in the mortar or once the mortar has fully hardened.

Detail SOLUTION "B" -
Debowed connectors
above the reinforcement

The marking out and anchoring of the connectors must be carried out after Phase 0 of substrate preparation, while the debowing must be performed only after the installation of the reinforcement.



MATERIAL IDENTIFICATION – C-MATRIX SYSTEM

(Y) INORGANIC MATRIX

(E) REINFORCEMENT MESH

(A1) FB-TUP10-....(bowed connectors)

(P3) FB-....INTEGRA FIXA-.... (anchoring resin)

Dimensions are given in mm unless otherwise specified
For the materials table, refer to drawing FRCM 08